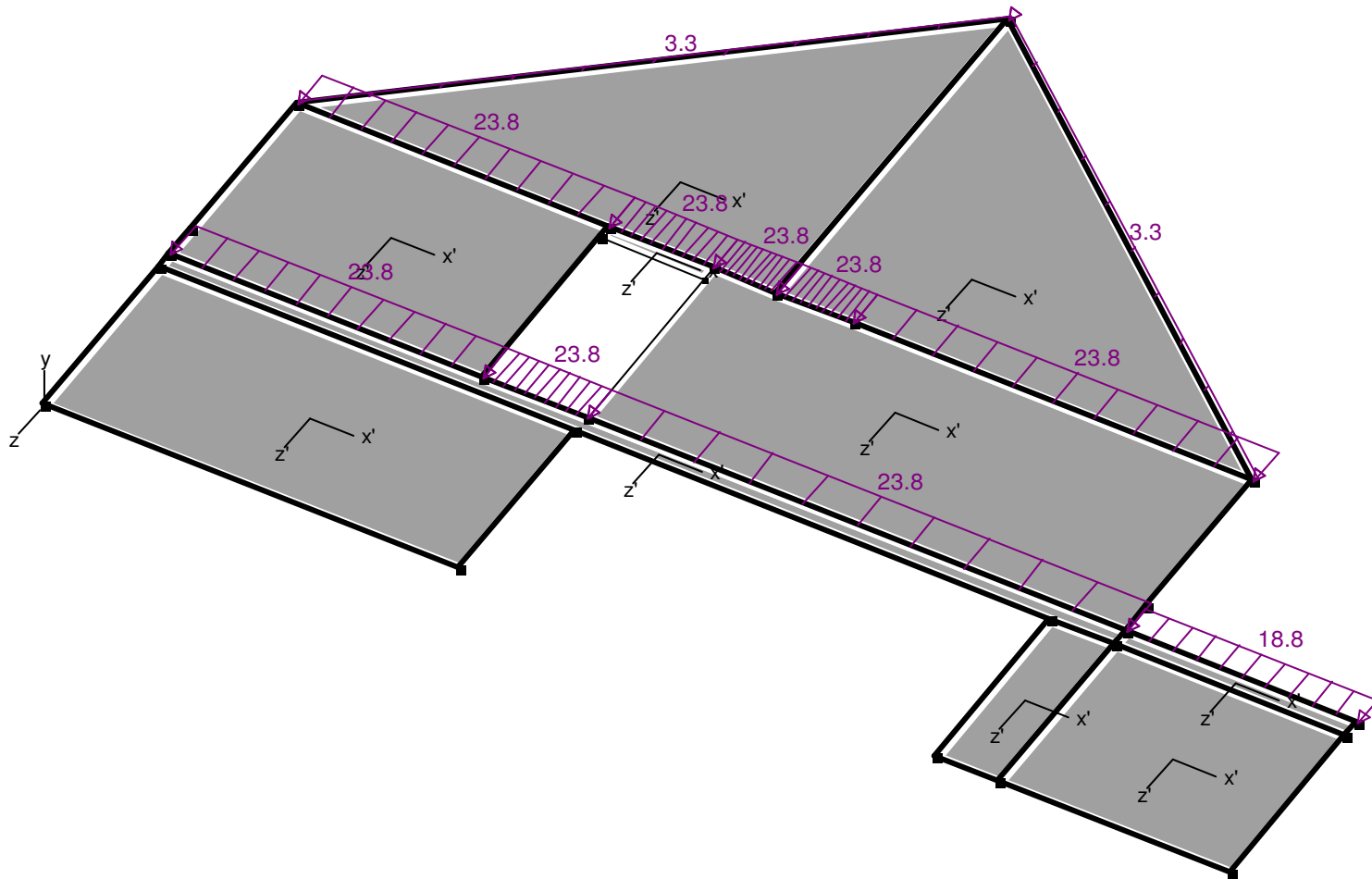
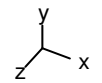
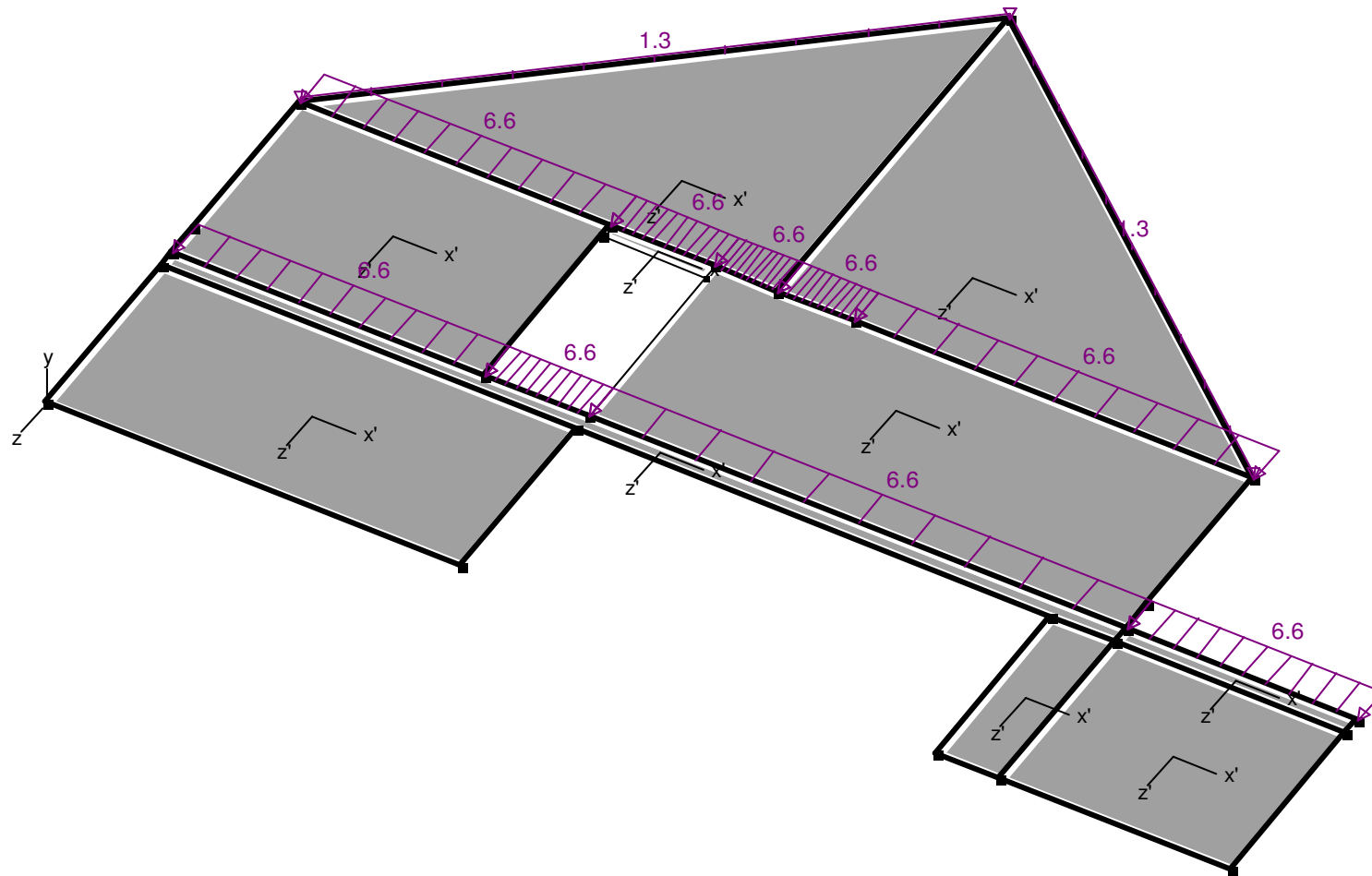




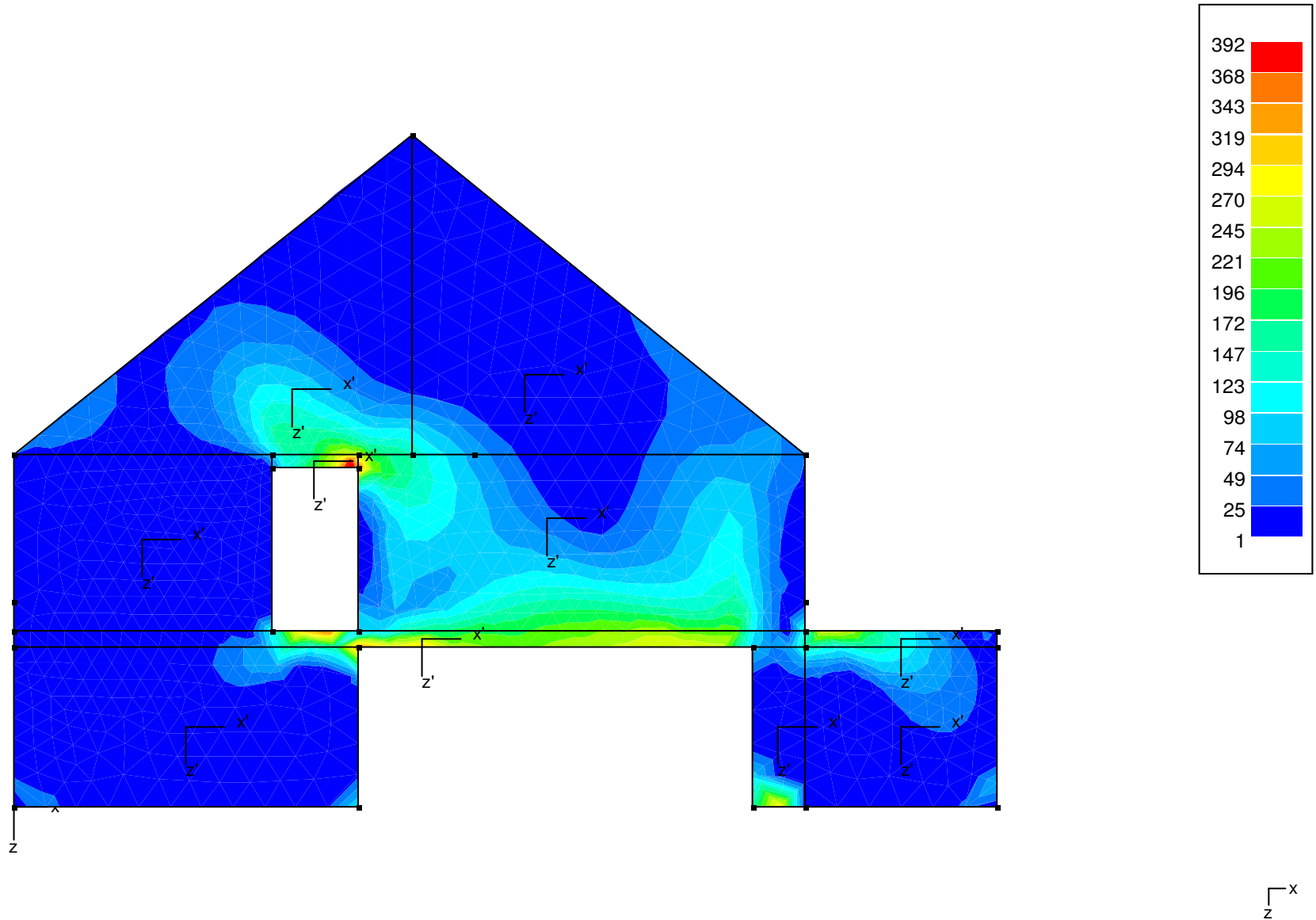
Lasten - permanent (kN, kNm, kN/m, kN/m<sup>2</sup>)



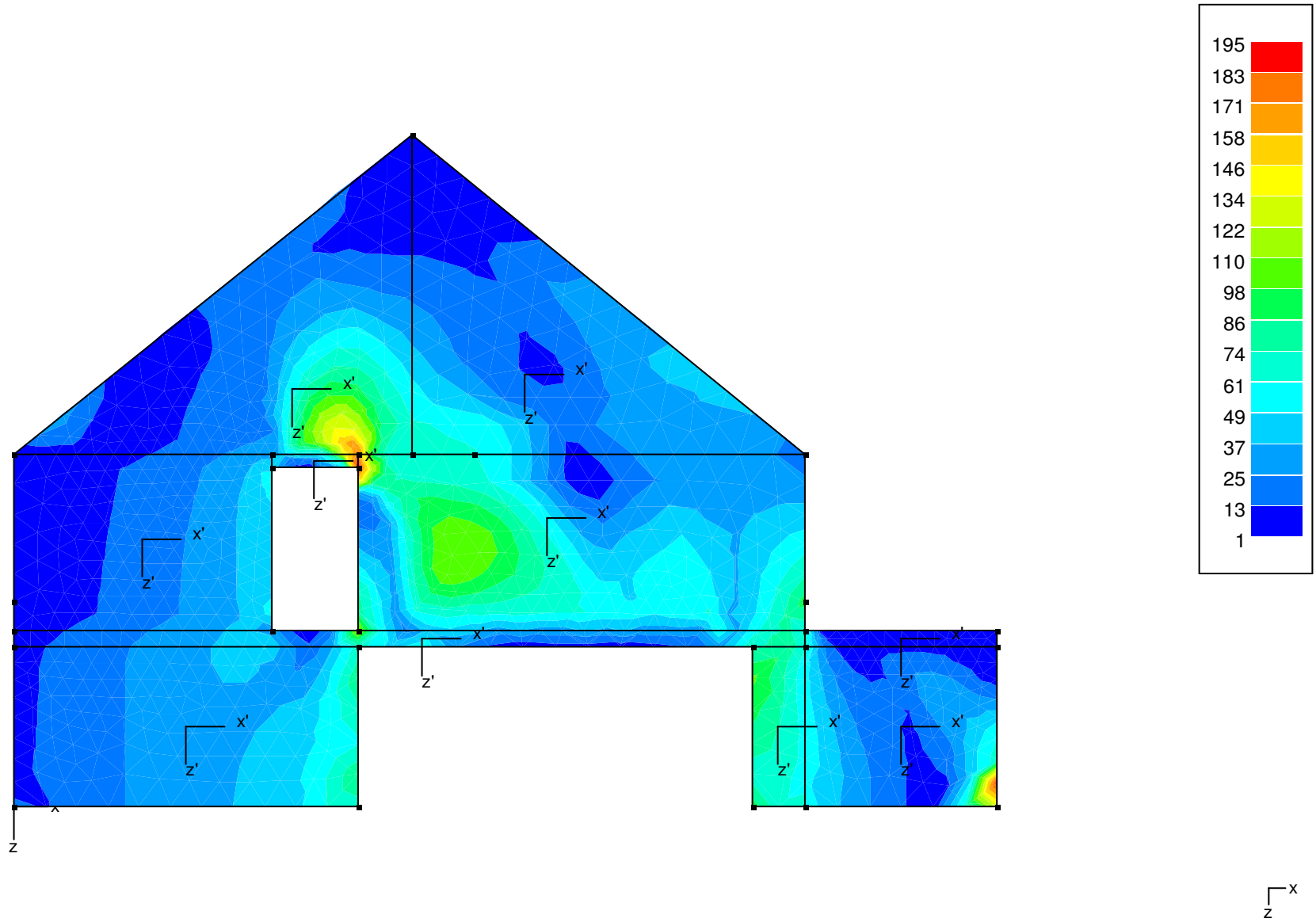
Lasten - Nuttige last/wo (kN, kNm, kN/m, kN/m<sup>2</sup>)



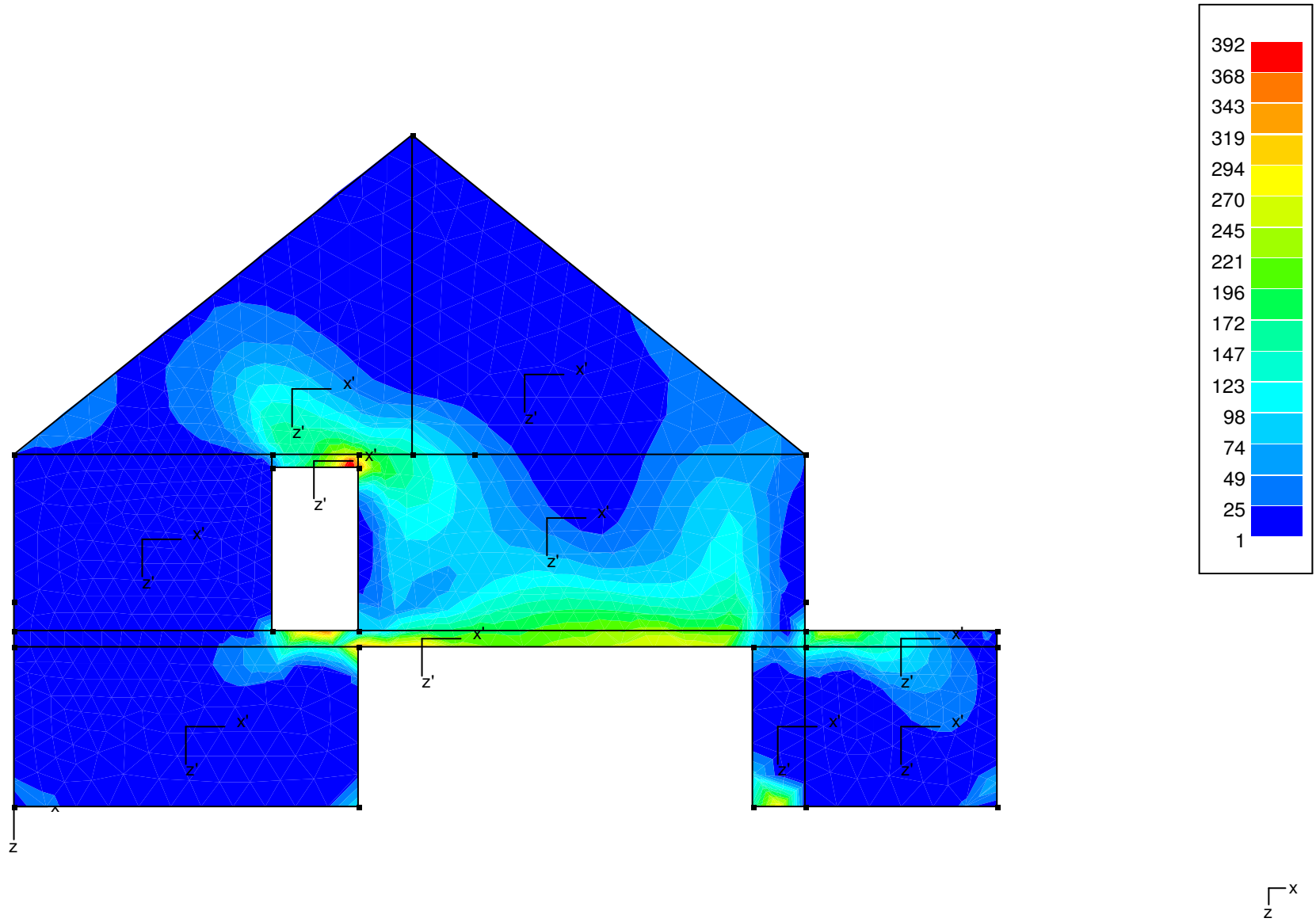
Plot - Bovenwapening // x'-as (mm<sup>2</sup>/m)



Plot - Bovenwapening // z'-as (mm<sup>2</sup>/m)

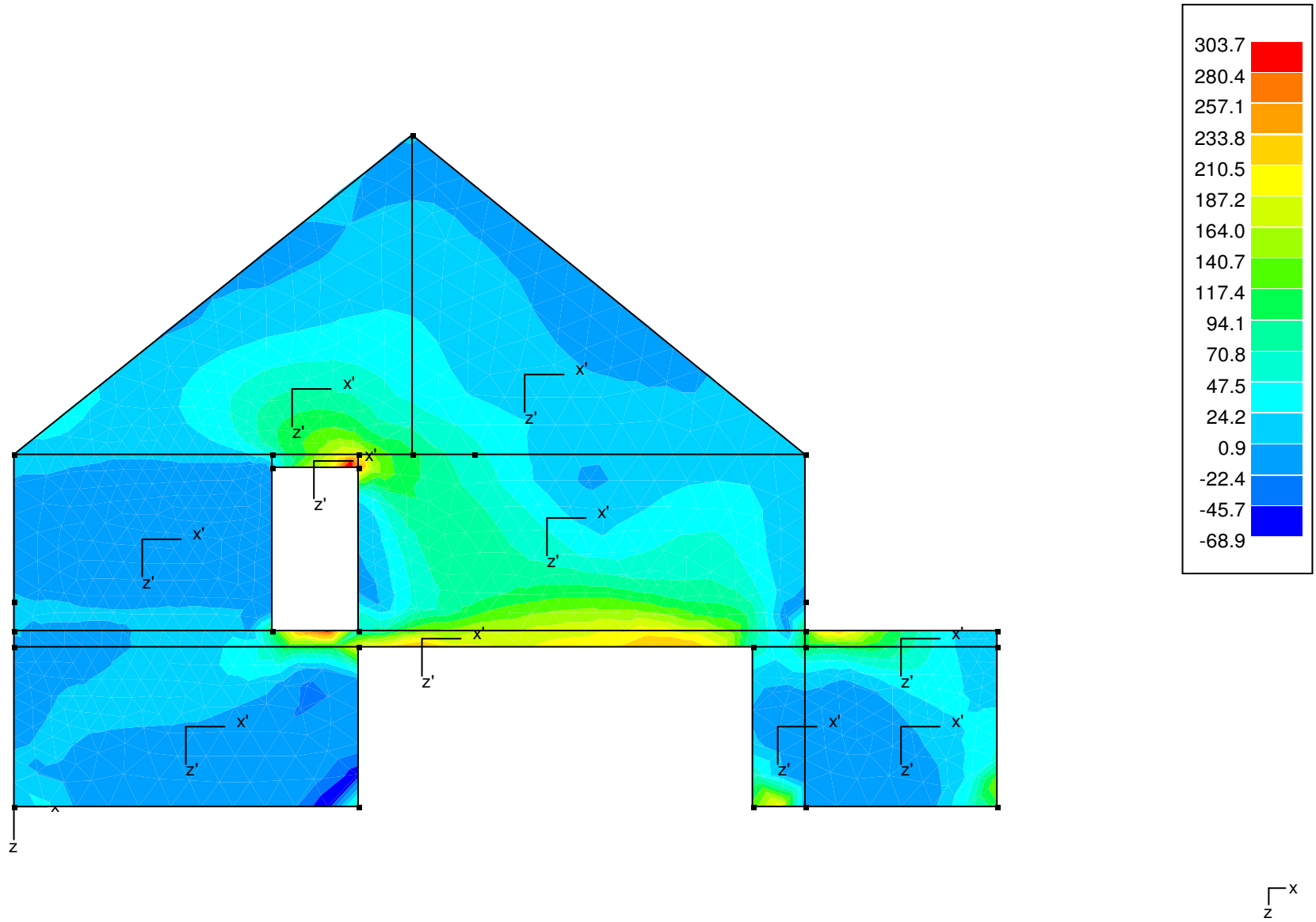


Plot - Onderwapening // x'-as (mm<sup>2</sup>/m)



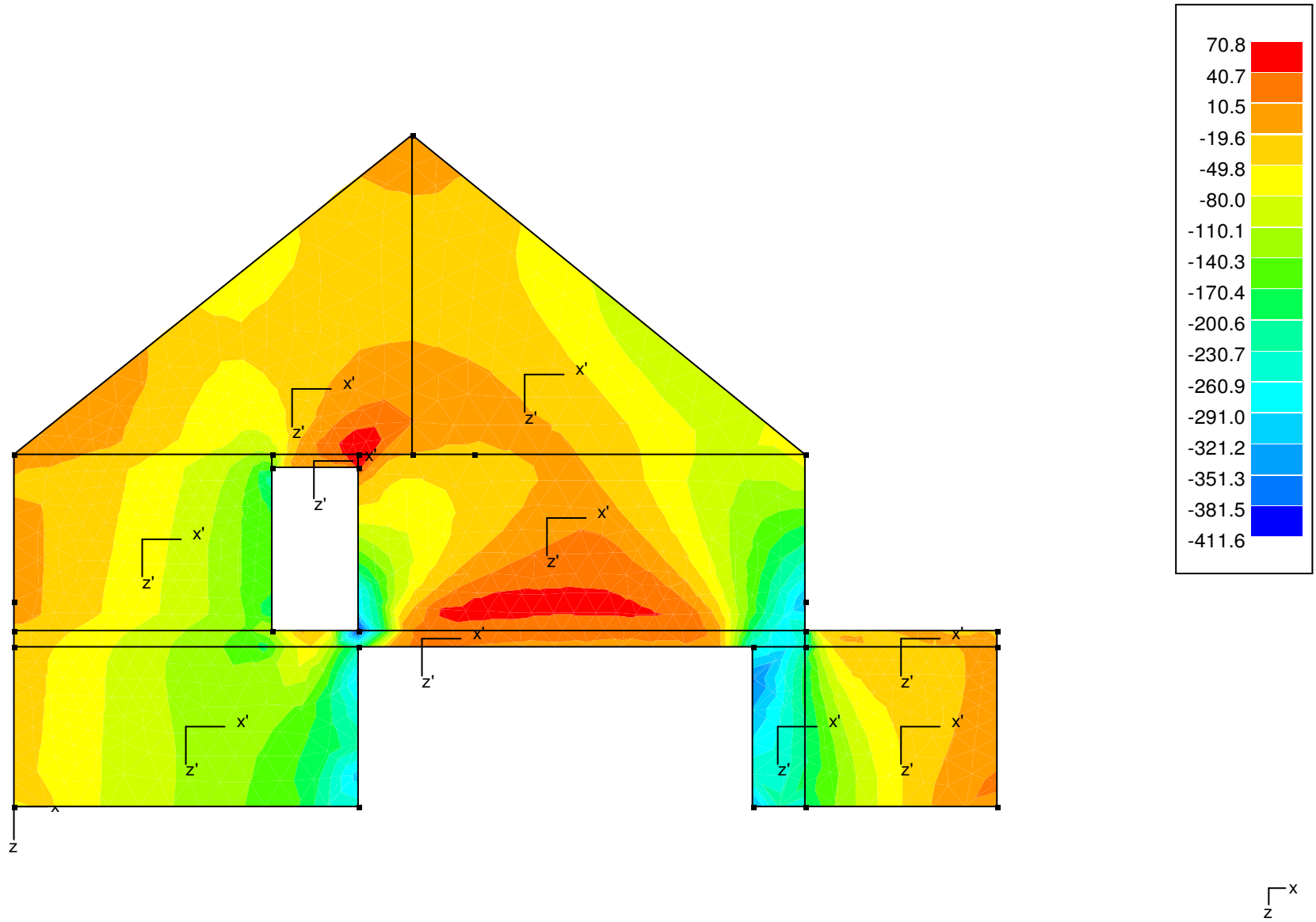


Plot - Hoofdnormalkracht N1 (kN/m) - U.G.T. max.





Plot - Hoofdnormalkracht N2 (kN/m) - U.G.T. max.





Plot - Normalkracht Nz'z' (kN/m) - U.G.T. max.

